



BERNARDS TOWNSHIP HEALTH DEPARTMENT

262 South Finley Avenue, Basking Ridge, New Jersey 07920

(908) 204-2520. Fax (908) 204-3075. www.bernardshealth.org

Contact: Lucy Forgione, Health Officer/Health Director

health@bernards.org

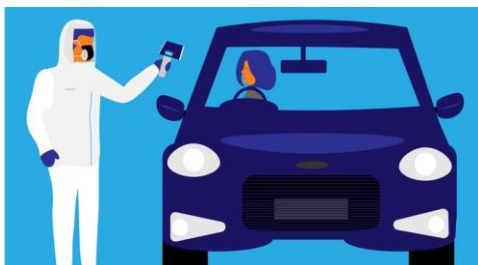
2019 Novel Coronavirus (COVID-2019) **Weekly Update #51 – November 19, 2020**

Drive Thru COVID-19 Testing

WHEN: Thursday, December 3, 2020. **By appointment only**

WHERE: Pleasant Valley Park, 2405 Valley Road,
Basking Ridge, NJ 07920

View the flyer [here](#), make your appointment [here](#)



Winter Sports Delay from NJSIAA

Click [here](#) to read the press release from the New Jersey State Interscholastic Athletic Association (NJSIAA) about the delay of winter sports including ice hockey, basketball, fencing, bowling, swimming, winter track and field, gymnastics, girls' volley ball and wrestling.

COVID FAQ Corner

Q: If I can't wear a mask inside a business, can I still enter?

A: Depends. If you cannot wear a mask due to a medical condition, accommodations can be made. Essential businesses cannot refuse entry to someone who has a medical condition and cannot wear a mask. They may offer options like curbside delivery and limited time in store. EO 192 notes that if the accommodation cannot be made, the business is permitted to deny entry.

Q: A friend of mine told me that they tested positive for COVID-19 and we recently were together for over 15 minutes without masks. I have not been contacted by a contact tracer. Why not?

A: If your friend took a rapid test and sometimes they take a day or two to come up in our system. Also, if your friend decided to not disclose their close contacts you would not be contacted by a contact tracer or health department.

Updates from the Governor's Office

▪ **Indoor Gatherings:**

- Indoor gatherings limited to 10 people max.
- The limit for weddings, funerals, memorials, religious and political activities remains the same – 25% of the capacity of the room up to 150 individuals.
- Indoor sporting competitions and practices should be limited to 10 people. You may exceed the 10-person limit only for individuals necessary for practice or competition such as players, coaches and referees but may not exceed 150 individuals.

▪ **Outdoor Gatherings**

- Outdoor gatherings limited to 150 people max.
- Weddings, funerals, memorial services, religious and political activities are not subject to the outdoor gatherings limit.
- An interstate agreement among 7 states to prohibit indoor interstate youth hockey games was announced 11/12 for CT, MA, ME, NH, RI, VT and NJ.
- [Executive Order 195](#) permits municipalities and counties to restrict operation hours of non-essential businesses after 8 pm. It does not apply to essential businesses.

NEW – COVID-19 Case Graphs by Municipality

This update will now be released weekly on **Thursdays**. It will include the Weekly COVID-19 Activity Level Index for that week, as well as visual graphs to represent the numbers for each of the communities covered by the Bernards Township Health Department.

Each municipality will have a graph for:

1. New COVID-19 Cases by Month
2. COVID-19 Cases by Age
3. COVID-19 Cases by Sex
4. Overall Cases and Deaths by Location. In this instance, community means NOT in a long-term care facility or congregate living situation.

You can find these graphs on Page 2 of the update!

Updated 11/19/2020

The Bernards Township Health Department is the contractual health agency serving Bernards Township, Bernardsville Borough, Chester Borough, Long Hill Township, Mendham Borough, and Peapack and Gladstone Borough. For update links and more information, visit: <http://www.bernardshealth.org>



BERNARDS TOWNSHIP HEALTH DEPARTMENT

262 South Finley Avenue, Basking Ridge, New Jersey 07920

(908) 204-2520. Fax (908) 204-3075. www.bernardshealth.org

Contact: Lucy Forgione, Health Officer/Health Director

health@bernards.org

2019 Novel Coronavirus (COVID-2019) Resources and Links

COVID-19 Case Graphs by Municipality

Somerset County

- [Bernards Township](#)
- [Bernardsville Borough](#)
- [Peapack & Gladstone Boroughs](#)

Morris County

- [Chester Borough](#)
- [Long Hill Township](#)
- [Mendham Borough](#)



COVID-19 Activity Level Report

New Jersey Department of Health
Communicable Disease Service

Week ending November 14, 2020 (MMWR week 46)¹

COVID-19 Statewide Activity Level Timeline



Low Moderate High Very High

COVID-19 Weekly Activity Reports

- Provides data on COVID-19 transmission by six regions in NJ.
- Updated every **Thursday**.
- Used to determine school exclusion and other re-openings.
- This week NJ is **HIGH RISK**.
- Click [here](#) to view this week's report

New Jersey COVID-19 Resources

- <https://covid19.nj.gov/> - Visit this webpage to get information on all things COVID-19 in New Jersey.
- COVID-19 New Jersey Dashboard + Positive Test Results available [here](#). Now including trends, hospital census, long term care facilities, psychiatric hospitals, demographics, contact tracing and school info. Updated daily.
- Somerset County NJ COVID-19 Status Dashboard available [here](#).
- Morris County NJ COVID-19 Status Dashboard available [here](#).
- Phone/Text Lines:
 - 2-1-1 for General COVID-19 questions (7am-11 pm)
 - 1-800-962-1253 for Clinical Questions (24/7)
 - Text NJCOVID to 898-211 to receive alerts
 - Text your zip code to 898-211 for live text assistance

Testing Updates – As of 11/19/20:

- **NJ Testing Sites** – [click here](#) for the most up to date information including new locations and testing criteria. The FEMA Testing Sites at Bergen County Community College and PNC Arts Center have closed.
 - **Somerset County** – Joint testing site with Hunterdon County at Raritan Valley Community College, 118 Lamington Road, Branchburg, NJ 08876. Drive thru testing by appointment only. **Next testing date TBD**. Subject to change. Check status of test site at <http://www.co.somerset.nj.us/covid19status>. Residents of Somerset County ONLY can make an appointment at <https://somerset-hunterdon.adlabscovidtest.com/>.
- Most doctor's offices, urgent cares and hospitals are testing symptomatic patients. If you are feeling unwell, call ahead to your healthcare provider. **DO NOT** just show up to an office, urgent care or ER.
- For more information on testing - [visit the CDC website on testing](#).

Updated 11/19/2020

The Bernards Township Health Department is the contractual health agency serving Bernards Township, Bernardsville Borough, Chester Borough, Long Hill Township, Mendham Borough, and Peapack and Gladstone Borough. For update links and more information, visit: <http://www.bernardshealth.org>